



## Applications

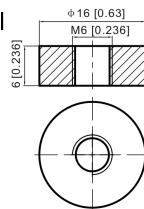
- Fire detection and fire systems
- Alarm, acces control and CCTV systems
- Uninterruptable Power Supply (UPS)
- Electric Power System (EPS)
- Emergency backup power supply
- Emergency light
- Railway signal
- Aircraft signal
- Alarm and security system
- Electronic apparatus and equipment
- Communication power supply
- DC power supply
- Auto control system

## Specification

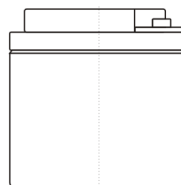
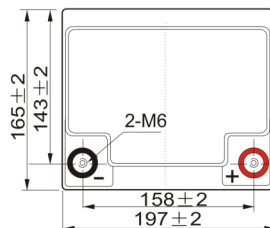
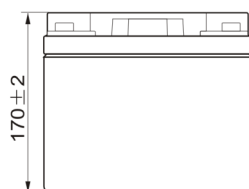
Nominal Voltage	12V
Nominal Capacity(20HR)	45.0AH
Dimensions	Length 197±2mm (7.76 inches) Width 165±2mm (6.50 inches) Container Height 170±2mm (6.69 inches) Total Height (with Terminal) 170±2mm (6.69 inches)
Approx Weight	14.5 Kg (32.0 lbs)
Terminal	B6
Container Material	ABS
Max. Discharge Current	540A (5s)
Internal Resistance	Approx 9.0mΩ
Operating Temp.Range	Discharge : -15~50°C (5~122°F) Charge : 0~40°C (32~104°F) Storage : -15~40°C (5~104°F)
Nominal Operating Temp. Range	25±3°C (77±5°F)
Cycle Use	Initial Charging Current less than 5.4A. Voltage 14.4V~15.0V at 25°C(77°F) Temp. Coefficient -30mV/°C
Standby Use	No limit on Initial Charging Current Voltage 13.5V~13.8V at 25°C(77°F) Temp. Coefficient -20mV/°C
Capacity affected by Temperature	40°C (104°F) 103% 25°C (77°F) 100% 0°C (32°F) 86%
Self Discharge	MXV series batteries may be stored for up to 6 months at 25°C (77°F) and then a freshening charge is required. For higher temperatures the time interval will be shorter.

## Terminal

B6 Terminal



## Dimensions



## Constant Current Discharge (Amperes) at 25°C (77°F)

F.V/Time	5min	10min	15min	20min	30min	45min	1h	2h	3h	4h	5h	6h	8h	10h	20h
1.85V/cell	57.6	49.0	49.0	40.9	32.5	24.6	20.2	12.8	10.2	8.30	6.69	5.82	4.73	4.04	2.23
1.80V/cell	73.6	59.1	59.1	48.4	38.4	28.6	22.6	14.0	10.9	8.86	7.18	6.25	5.01	4.28	2.25
1.75V/cell	80.8	64.6	64.6	52.1	39.9	29.7	23.6	14.5	11.1	9.06	7.36	6.42	5.10	4.32	2.27
1.70V/cell	88.1	69.0	69.0	54.7	41.5	30.9	24.4	15.1	11.4	9.30	7.55	6.55	5.17	4.36	2.32
1.65V/cell	95.1	73.3	73.3	58.1	43.8	31.7	25.2	15.5	11.9	9.62	7.76	6.70	5.25	4.45	2.35
1.60V/cell	103.2	78.4	78.4	61.9	46.2	33.0	26.1	16.1	12.3	9.92	8.02	6.84	5.30	4.50	2.36

## Constant Power Discharge (Watts/cell) at 25°C (77°F)

F.V/Time	5min	10min	15min	20min	30min	45min	1h	2h	3h	4h	5h	6h	8h	10h	20h
1.85V/cell	133.9	106.3	91.3	77.2	62.0	47.3	38.9	24.9	19.8	16.2	13.1	11.4	9.33	8.00	4.42
1.80V/cell	134.3	134.3	108.9	89.9	72.1	54.6	43.3	27.0	21.2	17.2	14.0	12.2	9.87	8.46	4.46
1.75V/cell	145.2	145.2	117.5	95.8	74.2	56.2	45.1	27.9	21.5	17.6	14.3	12.5	10.0	8.53	4.49
1.70V/cell	154.6	154.6	123.7	99.9	76.8	58.2	46.4	29.0	22.1	18.0	14.7	12.8	10.1	8.61	4.57
1.65V/cell	165.4	165.4	130.5	105.3	80.4	59.1	47.6	29.6	22.9	18.5	15.0	13.0	10.3	8.77	4.63
1.60V/cell	175.4	175.4	137.2	11.0	84.2	61.3	49.1	30.5	23.5	19.0	15.5	13.3	10.4	8.85	4.65